

NONPARTISAN

# VOTER'S GUIDE

GREENE, CHRISTIAN, WEBSTER COUNTIES

FREE  
TAKE ONE

GENERAL  
ELECTION  
NOVEMBER 3, 2020

**LWV** LEAGUE OF WOMEN VOTERS®  
OF SOUTHWEST MISSOURI

The League of Women Voters of Southwest Missouri is strictly nonpartisan  
and does not support or oppose any candidate or political party

# BE AN INFORMED VOTER

This Voter's Guide is produced by the League of Women Voters of Southwest Missouri to educate Greene, Christian and Webster County citizens on the positions of candidates seeking election and to learn about proposed amendments to the State Constitution.

The League contacted each candidate by email and two follow-up contacts. When a candidate did not respond, that is noted next to their name. Candidates are listed by political party in the order they appear on the ballot. This is determined by the party of the current governor, so for this election, Republicans are listed first.

**ALL INFORMATION FROM CANDIDATES IS PRINTED EXACTLY AS SUBMITTED.**

## HOW TO VOTE: In-Person Voting on Election Day

- Polls are open 6 a.m. to 7 p.m. on Election Day, Tuesday, Nov. 3. *Important:* If you are **in line** at 7 p.m. you have the right to cast your vote. You do not have to be finished voting by the time the polls close.
- The poll worker (election judge) will find your name on the list of registered voters, then ask you to show an approved ID (see blue box) and sign your name.
- Ask a poll worker if you are unsure how to mark your ballot or use the voting equipment.
- If you make a mistake on your ballot, you may request a new one from the poll worker.
- You **do not** have to vote on every candidate or issue for your ballot to be valid. It's okay to leave some races blank; your votes on the other races will still count.
- If you have questions, call the League's Vote411 Hotline, 866-687-8683 (VOTE) or the Missouri Secretary of State, 800-669-8683. Your County Clerk also can help; see County Clerk contact information on page 3.

## WHAT KIND OF I.D. DO I NEED TO VOTE?

For in-person voting, have one of these forms of ID to show the poll worker:

- Identification issued by the state of Missouri such as a driver's license or voter ID card.
- Identification issued by the United States government such as a passport.
- Identification issued by a higher education institution such as a college or technical school located in Missouri.
- A copy of your most recent utility bill, bank statement, paycheck or other government document that contains your name and address.

If you do not have any of these forms of ID but are a registered voter, you may cast a provisional ballot. Your provisional ballot will count if you return to your polling place on Election Day with a photo ID or your County Clerk determines the signature on your ballot matches the signature on your voter registration record. If you cast a provisional ballot, you'll receive instructions on how to verify that your ballot is counted.

## THANK YOU

This Voter's Guide is made possible by support from our sponsors. Browse their ads and send them your thanks. Our sponsors help the League in our efforts to "Make Democracy Work." The League of Women Voters of Missouri and the League of Women Voters of the United States collaborated on this publication.



**LEAGUE OF WOMEN VOTERS OF SOUTHWEST MISSOURI**  
417-501-6067 | [lwwsouthwestmo@gmail.com](mailto:lwwsouthwestmo@gmail.com) | [lwwswmo.org](http://lwwswmo.org)

## NEW VOTING OPTIONS FOR ELECTION DAY 2020

A new Missouri law expands voting options in 2020 due to the COVID-19 pandemic. The new law allows two options to vote by mail: absentee ballots and mail-in ballots. Any registered voter in Missouri may cast a mail-in ballot in the November 2020 election. No reason required.

**Absentee vs. Mail-in Ballots**—Absentee ballots have seven allowed excuses or reasons for not voting in person. If excuses 2 or 7 apply to you, no notary is required. For all other excuses, you must have the ballot notarized. If you do not meet any of the excuses listed on the absentee ballot, choose a mail-in ballot. In Missouri, mail-in ballots **MUST** be notarized and **MUST** be mailed in. **First, Request a Ballot**—To receive a vote-by-mail ballot or absentee ballot, you must first request it from your County Clerk. Request a form from your County Clerk, fill it out and then return it to the County Clerk's office. The deadline for requesting ballots is Oct. 21. (See County Clerk contact information below)

**Next Steps**—Absentee and mail-in voting officially began Sept. 22. When you receive the ballot you requested, vote it, sign it and get it notarized if necessary, and get it back in the mail as soon as you can. The longer you wait, the greater the chance your ballot will not reach the County Clerk by the deadline of 7 p.m. Election Day. **One More Option**—If you do not want to mail an absentee or vote-by-mail ballot and you do not want to stand in line at your polling location on Election Day, you have another option: You can vote **absentee in person** beginning Sept. 22, until Monday, Nov. 2. With this option, you'll visit your County Clerk's office, ask for an absentee ballot and submit your ballot in the Clerk's office. Note: You must be able to check one of the seven allowed excuses. This option is only for absentee voting, not mail-in voting.

Don't hesitate to call your County Clerk's office if you have any questions about these voting options.

## APPROVED REASONS FOR VOTING ABSENTEE IN MISSOURI IN 2020

1. Absence on Election Day from your election jurisdiction
2. Incapacity or confinement due to illness (No notary required)
3. Religious beliefs or practice
4. Working as an election worker
5. Incarceration, but eligible to vote
6. Certified participation in an address confidentiality program
7. Has contracted coronavirus or is at-risk due to any of the following (No notary required):
  - Is age 65 or older
  - Lives in a long term care facility
  - Has chronic lung disease/asthma
  - Has a serious heart condition
  - Is immunocompromised
  - Has diabetes
  - Has chronic kidney disease and is undergoing dialysis
  - Has liver disease

## QUESTIONS ABOUT VOTING?

**Greene County Clerk Shane Schoeller, 417-868-4055**

[greenecountymo.gov/county\\_clerk](http://greenecountymo.gov/county_clerk)

**Christian County Clerk Kay Brown, 417-582-4340**

[christiancountymo.gov/offices/county-clerk](http://christiancountymo.gov/offices/county-clerk)

**Webster County Clerk Stanley Whitehurst, 417-859-8683**

[webstercountymo.gov/county-clerks-office](http://webstercountymo.gov/county-clerks-office)

Or contact Missouri's election authority,  
the **Office of Secretary of State:**

800-669-8683, [elections@sos.mo.gov](mailto:elections@sos.mo.gov), [sos.mo.gov/elections](http://sos.mo.gov/elections)

**For voting problems, call  
866-OUR-VOTE (866-687-8683) or 1-888-VE-Y-VOTA (en Español)**

# TABLE OF CONTENTS

## SECTION 1

<b>GREENE COUNTY CANDIDATES</b>	<b>6</b>
<b>CHRISTIAN COUNTY CANDIDATES</b>	<b>9</b>
<b>WEBSTER COUNTY CANDIDATES</b>	<b>12</b>
<b>MISSOURI JUDGES</b>	<b>13</b>
<b>MISSOURI HOUSE OF REPRESENTATIVE CANDIDATES, DISTRICTS 130-141</b>	<b>14</b>
<b>MISSOURI SENATE CANDIDATES, DISTRICT 33</b>	<b>24</b>
<b>U.S. REPRESENTATIVE CANDIDATES, DISTRICTS 4 and 7</b>	<b>25</b>

## SECTION 2

<b>MISSOURI STATEWIDE CANDIDATES</b>	<b>28</b>
<b>PRESIDENTIAL CANDIDATES</b>	<b>36</b>
<b>STATEWIDE BALLOT ISSUES</b>	<b>39</b>

### DIGITAL VOTER'S GUIDE

Find all the same information printed here in a digital version on the Springfield News-Leader's website [news-leader.com](http://news-leader.com) or at [Vote411.org](http://Vote411.org). Using the digital version, you can build a personalized ballot: Enter your address to see only the races and ballot issues that will appear on your ballot. Share [Vote411.org](http://Vote411.org) with family and friends. PDF versions of this guide are available on the League of Women Voters website, [lwvswmo.org](http://lwvswmo.org), and the Springfield News-Leader website, [news-leader.com/votersguide](http://news-leader.com/votersguide).

Helpful voter information is also available in Spanish at [Vote411.org](http://Vote411.org).  
La información útil para el votante también esta disponible en español en [Vote411.org](http://Vote411.org)

# BUILD YOUR OWN BALLOT



Visit [Vote411.org](http://Vote411.org), the digital Voter's Guide produced by League of Women Voters



# SECTION 1

---

# VOTER'S

# GUIDE

★ ★ ★ ★ ★ TO ★ ★ ★ ★ ★

## GREENE COUNTY, CHRISTIAN COUNTY & WEBSTER COUNTY

# CANDIDATES

---



**We all have a part in democracy.**

As a longtime voter, I try to stay informed of local issues and the candidates involved. Let's keep democracy alive by challenging ourselves to learn more about our community and the issues before heading to the polls on election day.



909 E. Republic Road  
Springfield, MO 65804

417-300-1513  
ecurbow@aol.com  
www.EthelCurbow.com

# GREENE COUNTY

## Greene County Commissioner, District 1



**NAME** Rusty MacLachlan  
**POLITICAL PARTY** Republican  
**BIOGRAPHICAL INFO:**  
**Website:** rustymac.com  
**Facebook:** RustyMacLachlanMO  
**Twitter:** RustyMacLachlan  
**Age:** 58  
**Education:** B.S in Business from The University of Central Missouri

### Why are you qualified to serve in this office?

With a 37 year history of owning and operating a successful home building business I am uniquely qualified to best represent Greene County in the building of the new \$160,000,000 jail. Furthermore, my experience will benefit the county in the oversight of the Building Regulations Department, Planning and Zoning, the management of building codes, and all of the new construction that the county commissioners are charged with managing. As a member of the Springfield Traffic Advisory Board, combined with my contractor's background, I will be an asset to the team in the over site and management of the Greene County Highway Department. I also serve on the Habitat for Humanity Board of Directors, have twice been the President of the local Home Builders Association, and served two terms as the President of the Home Builder's Association of Missouri. I will work hard to protect and promote affordable housing, and I will take on the challenge of turning the tide on generational poverty.

### What would be your funding priorities for the next year?

It is imperative that Greene County stay on budget and on time with the building of the new county jail. The Covid shut down has clearly impacted our county revenues in a negative way. We must be diligent in holding the line on the costs of all current projects. My 37 years of running a successful business will be an advantage to the county commissioners team with regards to staying on budget, and finding ways to save our tax dollars. With 25% of our local families living at or below the poverty level, our county must find a way to move those families who are barely making it into career opportunities that will lift them up. I have served at the "Build my Future" event for the past several years. This event trains and encourages high school students to consider the many high paying job opportunities in our area. I have also worked with those in the manufacturing field to promote their career opportunities. Moving people into prosperity will benefit our county greatly.

## Greene County Sheriff



**NAME** Jim Arnott  
**POLITICAL PARTY** Republican  
**BIOGRAPHICAL INFO:**  
**Website:** jimarnott.com

Candidate was contacted but declined to respond



**NAME** Wes Zongker  
**POLITICAL PARTY** Democrat  
**BIOGRAPHICAL INFO:**  
**Website:** zongkerfor commissioner.com  
**Facebook:** Wes Zongker for County Commissioner  
**Twitter:** Wes4Commission  
**Age:** 63  
**Education:** Doctor of Education, Educational Leadership; Saint Louis University, 2011

### Why are you qualified to serve in this office?

I am an experienced administrator, not a politician. Voters should ask: who is most competent to serve as Commissioner? My roots go deep into rural Missouri where I learned the value of hard work and a good education. My first job was milking cows on a neighboring dairy farm at the age of 13. I worked fast food and retail jobs to put myself through college. While teaching elementary school, I completed advanced degrees, and later a Doctor of Education from Saint Louis University. I served 21 years as a school principal before retiring. I am not a politician, but I have a proven track record of competent leadership and experience with managing programs and facilities. I have supervised employees. I know how to listen and solve problems. Having served as treasurer for numerous organizations dating back to college, I am experienced with budgeting and accounting for funds in an open and transparent manner. Voters can expect the same competent leadership if I am elected Commissioner.

### What would be your funding priorities for the next year?

Funding priorities are determined by the amount of revenue available. Greene County's revenue is primarily generated through tax dollars and I anticipate next year's county budget will be tight given the uncertainty of COVID-19's impact on our economy. In 2017, voters approved a tax increase to expand the Justice Center in addition to other programs, services, and infrastructure needs. This was a significant commitment on the part of voters and tells me what their priorities were at that time. Given the real potential of a budget shortfall, even if not long-term, the priority should be to maintain programs and services that protect the health, safety, and welfare of the citizens of Greene County. This includes environmental protections, affordable housing, and juvenile and criminal justice issues. After that, I am willing to listen.

## Greene County Public Administrator



**NAME** Sherri Eagon Martin  
**POLITICAL PARTY** Republican

Candidate was contacted but declined to respond

## Greene County Commissioner, District 2



**NAME** John C. Russell  
**POLITICAL PARTY** Republican

Candidate was contacted but declined to respond



**NAME** Cecil Ince  
**POLITICAL PARTY** Libertarian  
**BIOGRAPHICAL INFO:**  
**Age:** 44  
**Education:** Associate's degree - Acting

**Why are you qualified to serve in this office?**  
 I'm a voter and resident of Greene County.

**What would be your funding priorities for the next year?**  
 Deregulation, drastically cut taxes, defund.



**NAME** Sara Lampe  
**POLITICAL PARTY** Democrat  
**BIOGRAPHICAL INFO:**  
**Website:** saralampeforgreencounty.com  
**Facebook:** sara.lampe  
**Age:** 71  
**Education:** BS in Elementary Education - MSU MS in Educational Administration - Awarded Honorary Doctorate in Public Affairs - MSU

**Why are you qualified to serve in this office?**  
 My decades of experience managing public employees and public dollars have uniquely prepared me for this challenge. Eight years in the MO Legislature gave me insight and understanding of the process for county government. I'm energetic, innovative, and forward-looking. I value the creativity and dedication of people who work with me. I'm secure enough to hear critiques and to learn from the expertise others bring to the table.

**What would be your funding priorities for the next year?**  
 The culture of the county will be a top priority for me. As a former Chair of the Missouri Human Rights Commission and a 50-year resident of Greene County I want this to be a welcoming, safe, and healthy place for all who choose to live, work, and play here. County employees experienced 7 years with no raises for performance or cost of living. Those employees work hard every day to keep us safe, staff our libraries, and care for our beautiful public parks. I'll work every day to ensure efficiency of services, accountability and oversight of public revenue, common sense decisions, and transparency of county government.



The Springfield Metropolitan Bar salutes the

*League of Women Voters*

and their ongoing efforts toward an informed electorate.

The bar encourages all voters to be familiar with the judges on the November ballot. Visit [YourMissouriJudges.org](http://YourMissouriJudges.org).

**Sometimes real superheroes live in the hearts of small children fighting big battles.**

**Working together to end child abuse**

# GREENE COUNTY

## Greene County Assessor



**NAME** Brent Lee Johnson  
**POLITICAL PARTY** Republican  
**BIOGRAPHICAL INFO:**  
**Website:** vote4johnson.com  
**Facebook:** BrentJohnsonMO

### Why are you qualified to serve in this office?

I have over 20 years of experience working in local government, both in the public and private sectors, including as a consultant for local government. I interviewed thousands of departments and offices, providing them with solutions to reduce redundancy, streamline workflows, increase productivity, reduce waste, improve data accuracy and customer service. I can bring these years of knowledge from hundreds of different governments, knowing what works and doesn't. Leadership is the foundation of a solid office, and the leadership experience I bring to the office is unmatched. I have managed government offices of over 35 employees, oversaw the SE operations for a company, ran various departments and groups. I have served as Chairman, Vice Chairman, Director and member of multiple boards and organizations, internationally, regionally and locally. I have been awarded some of the highest awards for leadership within the Boy Scouts of America.

### What steps would you take to improve the office's efficiency and transparency?

I will focus on the Citizens of Greene County, with improvements to customer service, removing the cost to access the online data and maps (something you the citizens already paid to have created), evaluate workflows to make sure staff is not overworked, adding staff if necessary. Technological improvements in how assessments data is collected in the field, staff currently does not have real-time access to data, by providing solutions to do assessments live will reduce the double data collection and possible errors from having to check notes taken earlier. Provide workshops and seminars on what your rights are as a citizen and how the appeals process works. I will run a completely open and transparent office, allowing the citizens to view all data use for their assessments. Improvements to technology to improve efficiency and service, saving the taxpayers time and money. I have provided a set of commitments I plan on completing over the next four years, these are on my website.

## Greene County Treasurer



**NAME** Justin Hill  
**POLITICAL PARTY** Republican

Candidate was contacted but declined to respond

**Make your voice heard**

The Elder Law Group is proud to support the League of Women Voters.

**THE ELDER LAW GROUP**

(417) 708-2044 | THEELDERLAWGROUP.COM

Danielle Kincaid      Angela Myers      Dianne M. Hansen

THE CHOICE OF A LAWYER IS AN IMPORTANT DECISION AND SHOULD NOT BE BASED SOLELY UPON ADVERTISEMENTS.

## Greene County Republicans

<p><b>President/Vice President</b>  <b>Donald J. Trump/Mike Pence</b></p> <p><b>Governor</b> <b>Mike Parson</b>  <b>Lt. Governor</b> <b>Mike Kehoe</b>  <b>Secretary of State</b> <b>Jay Ashcroft</b>  <b>State Treasurer</b> <b>Scott Fitzpatrick</b>  <b>Attorney General</b> <b>Eric Schmitt</b></p> <p><b>U S Congressman</b> <b>Billy Long</b></p> <p><b>State Representatives</b>  <b>130 District</b> <b>Bishop Davidson</b>  <b>131 District</b> <b>Bill Owen</b>  <b>132 District</b> <b>Sarah Semple</b>  <b>133 District</b> <b>Curtis Trent</b>  <b>134 District</b> <b>Alex Riley</b>  <b>135 District</b> <b>Steve Helms</b>  <b>136 District</b> <b>J Craig Fishel</b>  <b>137 District</b> <b>John Black</b></p>	<p><b>Greene County</b></p> <p><b>Associate Commissioner I</b>  <b>Rusty MacLachlan</b>  <b>Associate Commissioner II</b>  <b>John C Russell</b>  <b>Sheriff</b>  <b>Jim Arnott</b>  <b>Assessor</b>  <b>Brent Johnson</b>  <b>Treasurer</b>  <b>Justin Hill</b>  <b>Public Administrator</b>  <b>Sherri Eagon Martin</b></p> <p><b>Drop by Campaign Headquarters for candidate signs and literature.</b></p> <p><b>Greene County Republican Campaign Headquarters</b>  <b>3015 E. Sunshine</b>  <b>Springfield, MO</b>  <b>417 823-9130</b></p>
--	--

Please call us if you need a ride to the polls.

Paid for by Greene County Republican Central Committee, Justin Hill, Treasurer

## Christian County Coroner

NO PHOTO PROVIDED

**NAME** Mandi Yoder-Armitage  
**POLITICAL PARTY** Republican  
**BIOGRAPHICAL INFO:**  
**Age:** 42

### Why are you qualified to serve in this office?

I have been in forensics and death investigation for over 16 years. I have been the Christian county coroner since 2015 and served as the deputy coroner for 3 1/2 years prior to taking over as coroner. I have assisted with over 3,000 autopsies and external examinations. I have the knowledge through training and work to provide the absolute best service to Christian county as their current and future coroner.

### What steps would you take to improve the office's efficiency and transparency?

As the incumbent, I feel that this office already runs



ALL INFORMATION FROM CANDIDATES IS PRINTED EXACTLY AS SUBMITTED.



## Christian County Eastern Commissioner



**NAME** Lynn Morris  
**POLITICAL PARTY** Republican  
**BIOGRAPHICAL INFO:**  
**Website:** lynnmorris.org  
**Facebook:** LynnMorrisRPH  
**Age:** 71  
**Education:** B.S. Pharmacy; M.S. Healthcare Administration

### Why are you qualified to serve in this office?

I have lived in my district since 1977 I am a healthcare professional and long time businessman. Most of the issues today are either health related or business related. The County Commission needs a member that has healthcare/business training. With a pharmacy degree and a masters in healthcare administration running hospitals, I am prepared to help deal with the challenges of today and future. I know this district as I have served the last 8 years as the Eastern County State Rep. Prior to that I served 6 years on the Ozark School Board. I have listened to our citizens and know what the priorities are for my district. I will get citizens involved by having listening posts thru out my county, establish a citizens advisory board and escalate communication and transparency. The more people that I get involved the better that county government will be. I will spend full time with OT as required to serve.

### What would be your funding priorities for the next year?

I would continue to work with the our Governor and other state leaders to get grants to continue placing high speed internet in every home and business over the next four years. This is the highest priority on my district survey. I will use my state contacts to enhance other county projects. As one of the fastest growing counties in the state I would use the tremendous growth to propel moneys into our budget cash flow. I am not a fan of increasing taxes as I have a record of co sponsoring the first two state income tax cuts and record of not voting for tax increases. If a tax issue was proposed, the only way I would even think about it would be the citizens voting to make the final decision. Number two and thee priorities would be road improvements and repair We must plan for safer roads and better roads as our population continues to explode We must have a road improvement and repair plan and prioritize the projects. I believe I have the skill set to do more with less money.

NO PHOTO PROVIDED

**NAME** Nathan A. Billedo  
**POLITICAL PARTY** Democrat

Candidate was contacted but declined to respond

# CHRISTIAN COUNTY

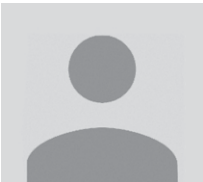
## Christian County Western Commissioner



**NAME** Hosea Bilyeu  
**POLITICAL PARTY** Republican

Candidate was contacted but declined to respond

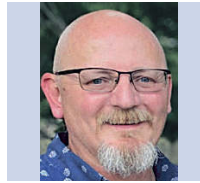
## Christian County Sheriff



**NAME** Brad Cole  
**POLITICAL PARTY** Republican

Candidate was contacted but declined to respond

## Christian County Public Administrator



**NAME** Ken Davis  
**POLITICAL PARTY** Republican

### Why are you qualified to serve in this office?

Nothing can prepare a person for this position better than experience and I have had the privilege of holding this position for the past 11½ years. The contacts, relationships, situations and education that I have been part of over the years have helped build an office that Christian County can be proud of.

### What steps would you take to improve the office's efficiency and transparency?

The office of Public Administrator on the county level is a very transparent office which operates with and is limited by partnership with city, county, state and federal agencies. There is always room for improvement, and I look forward to working together with these agencies to improve overall office and caseload efficiency.



---

The General Federation of Women's Clubs (GFWC) is an international women's organization dedicated to community improvement by enhancing the lives of others through volunteer service. The motto of the GFWC, "Unity in Diversity," was first stated in 1889. The motto exemplifies the diverse interests and methods GFWC members have for implementing programs and projects tailored to meet the needs of their communities, states and foreign countries.

GFWC Sorosis Club of Springfield has proudly served the community since December 1896. Our monthly meetings (September through June) bring guest speakers on wide ranging topics of current affairs and issues in our community, our state and our nation. Guests are welcome and new members are currently being accepted.

Visit our Facebook page @GFWCSorosisClub or contact Patricia Deck at 417-425-1081 or pdeck@cpozarks.org for more information.

---



# CHRISTIAN COUNTY

1

## Christian County Assessor

NO PHOTO PROVIDED

**NAME** Danny Gray  
**POLITICAL PARTY** Republican

Candidate was contacted but declined to respond

## Christian County Treasurer



**NAME** Karen Matthews  
**POLITICAL PARTY** Republican  
**BIOGRAPHICAL INFO:**  
**Website:** christiancountytreasurer.com  
**Facebook:** Re-Elect Karen Matthews for Christian County Treasurer  
**Age:** 62  
**Education:** Ozark High School

### Why are you qualified to serve in this office?

I have served as the Christian County Treasurer for the past 17 and 1/2 years and have a total of 45 years of accounting experience. During that time, the Treasurer's office has been audited a total of 19 times (17 independent and 2 state audits) and has been 100 percent compliant each time. We reconcile 8 bank statements each month. Every penny has been accounted for during the last 17 and 1/2 years. We successfully managed over \$48 million in 2019. I have 17 plus years of institutional knowledge. The office handles all of the revenues that come into the county and does accounts payable. All monies collected are accounted for and disbursed according to the law. We also initiate payroll on a biweekly basis. As Treasurer, I am involved in all aspects of the operations of the office and work with the other offices. In 2012, I was elected by my peers to serve as the Treasurer for the Missouri County Treasurer's Association. I also serve as the Treasurer for Mt. Zion Baptist.

### What steps would you take to improve the office's efficiency and transparency?

As Treasurer, we are constantly working to improve the efficiency in the office. After several months of researching commercial payment options for our vendors and presenting it to all parties involved in the accounts payable process, I am happy to say that we are in the process of implementing this program and will be using a local bank to assist in making commercial payments for the county. This will be much safer and our vendors will receive their payments much faster. This will be very beneficial in reducing the amount of outstanding checks that we deal with on a daily basis and voiding and reissuing those lost checks. In the near future, we will be working to have our accounts payable and receipting online so the taxpayers of Christian County can see how their tax dollars are being spent. I have always had an open door policy and am very transparent by returning phone calls, emails and sunshine requests in a timely manner.

VALUES-DRIVEN CARE IS OUR SPECIALTY

## Meet your lifetime family dentist.

DR. ROBERT W. NUNN, D.D.S.

**☎ GIVE US A CALL**

(417) 887 8801

**➤ VISIT OUR OFFICE**

3050 S National Ave # 105  
Springfield, MO 65804



**M** MEADOR CENTER FOR POLITICS AND CITIZENSHIP

**The L.E. Meador Center for Politics and Citizenship is engaged in a variety of educational and civic programs; supporting conversations with visiting scholars and experts, student scholarships, internships, study abroad opportunities and community engagement.**

[drury.edu/meadorcenter](http://drury.edu/meadorcenter)

CHRISTIAN COUNTY CANDIDATES

# WEBSTER COUNTY

## Webster County Coroner

NO PHOTO PROVIDED

**NAME** Michael P. Taylor  
**POLITICAL PARTY** Republican  
**BIOGRAPHICAL INFO:**  
Facebook: <https://www.facebook.com/groups/291472452249399>

Candidate was contacted but declined to respond

## Webster County Northern Commissioner

NO PHOTO PROVIDED

**NAME** Dale Fraker  
**POLITICAL PARTY** Republican

Candidate was contacted but declined to respond

NO PHOTO PROVIDED

**NAME** Terry Hardy  
**POLITICAL PARTY** Democrat

Candidate's contact information unavailable

## Webster County Southern Commissioner

NO PHOTO PROVIDED

**NAME** Randy Owens  
**POLITICAL PARTY** Republican

Candidate was contacted but declined to respond

## Webster County Sheriff

NO PHOTO PROVIDED

**NAME** Roye H. Cole  
**POLITICAL PARTY** Republican

Candidate was contacted but declined to respond

## Webster County Assessor

NO PHOTO PROVIDED

**NAME** Austin Graybill  
**POLITICAL PARTY** Republican

Candidate was contacted but declined to respond

## Webster County Public Administrator

NO PHOTO PROVIDED

**NAME** Danielle L. Boggs  
**POLITICAL PARTY** Republican

Candidate was contacted but declined to respond

## Webster County Surveyor

NO PHOTO PROVIDED

**NAME** Gary A. Drennan  
**POLITICAL PARTY** Republican

Candidate's contact information unavailable

The League contacted each candidate by email and two follow-up contacts. When a candidate did not respond, that is noted next to their name.



Mortgages made simple  
All the tools you'll need  
Your best interest in mind

3310 E. Sunshine  
Springfield, MO 65804  
417-882-1400 or 888-214-0777

Judges who serve under the Non-Partisan Court Plan do not run against challengers and are prohibited by the Code of Judicial Conduct from campaigning for retention. To help voters gain insight as to performance of judges seeking retention this year, the Judicial Performance Review Committee - a statewide panel of lawyers, non-lawyers, and retired judges - has reviewed the performance of each nonpartisan judge appearing on this year's general election ballot. Voters will be asked to vote either **Yes - Retain** or **No - Do not retain** for each judge.

## Missouri Supreme Court Justice

Shall the judge listed below be retained in office?



**Patricia Breckenridge**

**Education:** J.D., University of Missouri-Columbia.

**Judicial Experience:** Associate Judge, 28th Circuit, 1982-1990; Judge, Western District Court of Appeals, 1990-2007; Judge, Missouri Supreme Court, 2007-present.

**Missouri Bar committee recommendation:** Retain

**More info:** [yourmissourijudges.org/judges/patricia-breckenridge-2020/](http://yourmissourijudges.org/judges/patricia-breckenridge-2020/)

## Circuit Judge, Circuit 31, Division 2

Shall the judge listed below be retained in office?



**David C. Jones**

**Education:** B.A., Albright College, J.D., Delaware Law School.

**Judicial experience:** 31st Circuit judge, 2009-present.

**Missouri Bar committee recommendation:** Retain

**More info:** [yourmissourijudges.org/judges/david-jones-2020/](http://yourmissourijudges.org/judges/david-jones-2020/)

## Circuit Judge, Circuit 31, Division 6

Shall the judge listed below be retained in office?



**Becky J. W. Borthwick**

**Education:** B.A., University of Missouri in 1991, J.D., University of Oklahoma in 1995.

**Judicial experience:** Circuit Judge, 31st Circuit, 2019-present. Prior: Associate Circuit Judge, 31st Circuit.

**Missouri Bar committee recommendation:** Retain

**More info:** [yourmissourijudges.org/judges/becky-borthwick-2020/](http://yourmissourijudges.org/judges/becky-borthwick-2020/)

## Court of Appeals, Southern District

Shall the judge listed below be retained in office?



**Gary W. Lynch**

**Education:** B.A., Southwest Baptist University, J.D., University of Missouri-Columbia School of Law.

**Judicial experience:** Missouri Court of Appeals, Southern District, 2006-present.

**Missouri Bar committee recommendation:** Retain

**More info:** [yourmissourijudges.org/judges/gary-lynch-2020/](http://yourmissourijudges.org/judges/gary-lynch-2020/)

## Associate Circuit Judge, Circuit 31, Division 23

Shall the judge listed below be retained in office?



**Andy Hosmer**

**Education:** B.A. Psychology, University of Missouri at Columbia, J.D., New York University School of Law.

**Judicial experience:** Associate circuit judge, 31st circuit, 2015-present.

**Missouri Bar committee recommendation:** Retain

**More info:** [yourmissourijudges.org/judges/douglas-hosmer-2020/](http://yourmissourijudges.org/judges/douglas-hosmer-2020/)

## Associate Circuit Judge, Circuit 31, Division 26

Shall the judge listed below be retained in office?



**Ron Carrier**

**Education:** B.A. in political science from Drury university, J.D. from the University of Missouri at Columbia.

**Judicial experience:** Associate circuit judge, 31st circuit, 2013-present.

**Missouri Bar committee recommendation:** Retain

**More info:** [yourmissourijudges.org/judges/james-carrier-2020/](http://yourmissourijudges.org/judges/james-carrier-2020/)

# MISSOURI HOUSE OF REPRESENTATIVES

## Missouri House District 130

NO PHOTO PROVIDED

**NAME** Bishop Davidson  
**POLITICAL PARTY** Republican  
**BIOGRAPHICAL INFO:**  
Website: bishopformo.com

Candidate was contacted but declined to respond



**NAME** Dave Gragg  
**POLITICAL PARTY** Democrat  
**BIOGRAPHICAL INFO:**  
Website: davegragg.com  
Facebook: gragg4mo  
Age: 44  
Education: BA Communication,  
Truman State University

### What areas of public policy are you personally passionate about and why?

I am a big fan of investments that pay dividends in the long run, like education, infrastructure, the environment and broadband Internet in rural areas. When I first started to run, I knew that Missouri would likely have to raise taxes to truly support those issues. I still believe that, although I also realize that a recession is not the best time to try to get more money out of taxpayers. Part of the reason I'm running is because I think the supermajority is more concerned with short-term cultural wars that give them an emotional boost from their supporters than they are the long-term good of our state. I look forward to joining the fight that others are leading for protecting all Missourians, including criminal justice reform, the Missouri Non-Discrimination Act, gun control and protecting our farmers and unions.

### What would be your approach to addressing the current challenges facing our state?

I believe my knowledge and experience would be valuable in addressing the challenges our state faces. I've owned an insurance agency since 2011. Before that, I spent 12 years as a newspaper editor and reporter and dealt with state and local government issues in four states. Both of my careers give me a good perspective and understanding of issues that come before the legislature. When those aren't enough, I ask questions and listen to advice from experts. As I mentioned above, I'm a big fan of looking at the long-term affects of an issue rather than just the short-term benefits.

INSPIRING THE LEADERS OF TOMORROW.  
VALUING EVERY VOICE AND OPINION.  
FULFILLING STUDENT-FOCUSED EDUCATIONAL EXPERIENCES.

MISSOURI STATE IS  
PREPARING GLOBAL  
CITIZENS READY TO  
PURSUE THEIR PATH  
WITH INTEGRITY.

Missouri State

MISSOURI STATE .EDU

Learn more about our mission in public affairs, affordable, quality education and vibrant community of scholars.

EO/AA/AF/ Veterans/Disability/Sexual Orientation/Gender Identity MAC 07-28-2020

**KWM** KIRKLAND WOODS & MARTINSEN LLP  
www.kwm-law.com  
(417) 893-5288

- ESTATE PLANNING
- FIDUCIARY LITIGATION
- PROBATE, TRUST, & ESTATE ADMINISTRATION
- GUARDIANSHIP & CONSERVATORSHIP
- REAL ESTATE
- BUSINESS FORMATION & PLANNING
- ALTERNATIVE DISPUTE RESOLUTION
- ESTATE & GIFT TAX PLANNING

**ACTEC**  
THE AMERICAN COLLEGE OF TRUST AND ESTATE COUNSEL

KIRKLAND WOODS & MARTINSEN LLP 2020  
RECOGNIZED BY  
**Best Lawyers**

## Missouri House District 131



**NAME** Bill Owen  
**POLITICAL PARTY** Republican  
**BIOGRAPHICAL INFO:**  
**Website:** citizensforowen.com  
**Facebook:** BillOwenforState Representative  
**Age:** 67  
**Education:** Parkview High School; Drury University; Graduate School of Banking University of Wisconsin

### What areas of public policy are you personally passionate about and why?

Job Growth and Creation would be one area. As a former Member of the Missouri House I authored and cosponsored a portion of Governor Kit Bond's Legislative Agenda in 1982 to create Enterprise Zones in the state. Over the past 38 years that measure has induced millions of dollars of private sector investment and created thousand of jobs in the older areas of our cities and under served rural areas. I also want to focus on a thorough reexamination of how we are appropriating money today to make sure it is being done in the most efficient and effective manner possible. One area that I would like to see addressed is how we are providing tax credits for people of low to modest income. Currently Mo Housing Development Corp is focused on building new apartments. I want to see that focus switched to helping rebuild the single family housing stock in our older neighborhoods. Thus with the same funds we are not only providing low income housing but helping to rebuild our older neighborhoods.

### What would be your approach to addressing the current challenges facing our state?

We have to run state government like a business. We have to look at it as a very large social service not for profit. Our growth in spending has been significant. When I left the Missouri House in 1982 the total state budget was \$4 billion. Today it is \$35 billion. We have to better utilize the resources we have to meet the funding needs of the future. We need a cooperative effort between the Legislative and Executive Branches to find waste and inefficiencies that have developed over the years. I want to make that a focus going forward.



**NAME** Allison Schoolcraft  
**POLITICAL PARTY** Democrat  
**BIOGRAPHICAL INFO:**  
**Website:** upballot.com/allison-schoolcraft  
**Facebook:** AllisonSchoolcraftForMissouri

### What areas of public policy are you personally passionate about and why?

Watching Missouri legislators ignore the will of the people time and time again is what finally convinced me to run for office. The voters of our state overwhelmingly support campaign reform and they are anti-right-to-work. These amendments pass overwhelmingly when taken to Missouri voters and then are completely ignored by our legislators. Missourians want fairly drawn legislative districts, they want lobbyist to have less influence, they want money out of politics, which is why Clean Missouri had overwhelming support in 2018 and the General Assembly has ignored our vote and is wasting time and resources sending yet another ballot initiative to be voted on - because they didn't like the results of Clean Missouri. Missourians are hurting right now. Rural hospitals are shuttering their doors, medical costs continue to rise, our infrastructure is in disrepair and wages are stagnant. Our legislators need to be in Jefferson City dealing with these issues not rehashing Clean Missouri.

### What would be your approach to addressing the current challenges facing our state?

The only approach that will work is going to require both parties, to come together for the good of our state and work together. Missourians need to take a good hard look at their representatives when they cast their ballot. Now is not the time for partisan politics. The Missouri legislature has been controlled for too long by one party and the result of that is a budget that doesn't cover the very basic; continued defunding of our schools and an infrastructure in need of repair. As your representative, I will collaborate and work with members of both parties to find solutions to the challenges that face our state.

## Missouri House District 132



**NAME** Sarah Semple  
**POLITICAL PARTY** Republican  
**BIOGRAPHICAL INFO:**  
**Facebook:** Sarah4MO  
**Age:** 43  
**Education:** College degree

**What areas of public policy are you personally passionate about and why?**

**Education:** Not all students are the same, and parents know their children's unique needs. We need to allow for portability of educational tax dollars.  
**Housing:** In Springfield in particular, we have homes here being sold at a value that even a single person working full time on minimum wage could afford to purchase. We know that when people own their own homes they help to create stronger communities, build wealth, and it is often cheaper than renting.  
**Crime:** We need to look at how and why bonds are issued, to ensure that people are not incarcerated unnecessarily, which causes them to lose their jobs and homes as well as costing tax payer money to keep them jailed when they are not a threat to public safety or a flight risk.

**What would be your approach to addressing the current challenges facing our state?**

**Education:** The tax dollars need to be tied to the students whether they choose a private, public, charter or virtual/home school option, and those funds need to be accessible by the parents.  
**Housing:** Working with Missouri Housing and Development Commission, I would like to create a path to home ownership for some of our hard working Missouri citizens to purchase and realize one of the cornerstones of the American Dream.  
**Crime:** We need to change the way we think about how we prosecute crimes and how we judge a "good" prosecutor. Success as prosecutor should be based on recidivism rates balanced with lower incarceration rates, rather than simply having high conviction rates.



**NAME** Crystal Quade  
**POLITICAL PARTY** Democrat  
**BIOGRAPHICAL INFO:**  
**Website:** crystalquade.com  
**Facebook:** crystalquadeHD132  
**Age:** 35  
**Education:** Bachelor's of Social Work, Missouri State University

**What areas of public policy are you personally passionate about and why?**

As a social worker, all things relating to poverty are of interest to me. From childcare accessibility to healthcare, I am passionate about making sure Missourian's basic needs are met. As a first generation high school graduate and a mother of Springfield Public School children, the funding of our public education system and ensuring community colleges and universities are affordable is a huge priority. The crisis of addiction has touched my family, as I know it has so many others, and working on policies to combat the crisis and provide services to those in need is of huge importance. Since being in the legislature, I have fought hard for local control, on behalf of our seniors, for workers and against corporate giveaways. While serving on the Budget committee, prior to becoming Minority Floor Leader, I spent countless hours fighting for Springfield values while pushing the committee to not balance the budget on the backs of our most vulnerable.

**What would be your approach to addressing the current challenges facing our state?**

Right now our state is in a budget crisis. As a balanced budget state we do not have enough money for basics. Our k-12 transportation has been slashed by millions, forcing many schools to be only four days a week. Prescription drug coverage has been cut, higher education, transportation, clean drinking water initiatives, our bridges are crumbling and the list goes on. We need to be creative in creating revenue. Passing "Wayfair", online sales tax collections, would bring our brick and mortar stores at a level playing field of online retailers and create millions. Closing the "timely filing loophole", the tax break that corporations receive when they file their taxes on time, would generate over \$114 million according to the MO Budget Project. Along with revenue, the biggest challenge we face is the lack of balance in Jefferson City. Overwhelming one party rule does not allow for creation of thoughtful policy that benefits everyone. My reelection will help with this.

**Community Leaders Investing in You**

Missouri Trust & Investment Company is a state-chartered independent trust company, locally managed in Springfield, Missouri, whose shareholders and partner banks are community leaders in Missouri. We offer comprehensive trust and estate administration services in addition to investment services.

Local • Independent • Fiduciary • Disciplined

Laura Kiesel, CTFA • Sharon Jobe, CFP • Teresa Hall  
 Diane Musick • Dr. Nancy O'Reilly, PsyD • Mattie Barrett

**M** 417.450.4797  
 missouritrustandinvestment.com

## Missouri House District 133



**NAME** Curtis Trent  
**POLITICAL PARTY** Republican  
**BIOGRAPHICAL INFO:**  
 Website: curtisdtrrent.com  
 Facebook: CurtisTrentMO

Candidate was contacted but declined to respond



**NAME** Cindy Slimp  
**POLITICAL PARTY** Democrat  
**BIOGRAPHICAL INFO:**  
 Website: cindyslimp.org  
 Facebook: Cindy Slimp for the People  
 Twitter: ForSlimp  
 Age: 43  
 Education: Some College

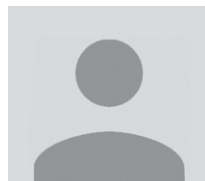
### What areas of public policy are you personally passionate about and why?

I want to improve the quality of life for working class Missourians. My primary issues to address are Healthcare, Education and Ethics Reform. People need better access to affordable healthcare and I have been an advocate for Medicaid Expansion. Healthcare should be a right yet many people are one emergency room visit or unexpected major expense away from a financial crisis. Any time our state makes budget cuts, education funding is the first place they look to find 'extra' money and our kids are suffering because of these cuts. We have been consistently below average in both categories of Quality of Education and in High-School Graduation Rates & College-Degree Attainment. It's time we prioritize learning. Clean Missouri was a huge win for our state but there is still much more work to be done for Ethics Reform. We need to end Dark Money. Our elected officials should work for the people, not wealth donors and corporate interests. People should always come first.

### What would be your approach to addressing the current challenges facing our state?

I think our citizens often don't feel heard. It's my belief that a legislator has to be engaged with their constituents to understand and support their needs. If our state truly wants to address crime, they should be addressing poverty and be supportive of programs that help people lift themselves up. People deserve to benefit from the taxes they pay. We need to ensure that local control remains intact for cities and counties. Legislators have to work together, listen to experts and create equitable policies across the state. I will keep an open mind when reviewing and discussing legislation and my first consideration will be how it impacts working families and where the money comes from. As a candidate, my goal is to hear what people need and when elected, work for what they have asked for. My campaign is grass roots, small donations and dedication. I plan to continue working hard, across the aisles to create legislation that works for an equitable livelihood for everyone.

## Missouri House District 134



**NAME** Alex Riley  
**POLITICAL PARTY** Republican  
**BIOGRAPHICAL INFO:**  
 Website: RileyforStateRep.com

Candidate was contacted but declined to respond



**NAME** Derrick Nowlin  
**POLITICAL PARTY** Democrat  
**BIOGRAPHICAL INFO:**  
 Website: nowlinforthe134th.com  
 Facebook: Nowlinforthe134th  
 Twitter: DerrickNowlinMO

### What areas of public policy are you personally passionate about and why?

The policy I am most passionate about is money in politics. I am running my campaign from individual donations from supporters. They are donating to my campaign because they believe in the policies I support and they know I will work for them. We need representatives who aren't beholden to special interests. I will be that representative. Next, I support Medicaid Expansion. First, 230,000 more people will have access to healthcare, Missouri will gain an estimated 16,000 new jobs, Missouri saves \$39 million in the first year, and by 2026 we will have saved \$1 billion. I also believe we should fight to fully fund our public school systems. Today, Missouri ranks 45th in school funding. With such low investment in schools, it falls on localities to make up the difference. Wealthy areas have great schools, while other schools struggle to pay teachers, have newer textbooks, and a safe learning environment.

### What would be your approach to addressing the current challenges facing our state?

There are a lot of challenges facing our state, unfortunately, Covid-19 has only made things worse. First, we need to increase revenue in this state. We should start by eliminating loopholes in our tax policy that only benefit big businesses, but show no benefit for everyday people. We can start by getting rid of things like the LLC loophole, which was meant to be a tax break to encourage businesses to hire more people, this hasn't happened. We should institute a Wayfair tax on online businesses. Finally, we must lessen the stress on lower and middle-class families, by creating an earned income tax credit. We need to invest in our infrastructure. Public works programs not only provide job opportunities but offer incentives for new businesses to come to the state and ability for businesses to expand. We know that there is a lot that is unfair and unjust in our state right now. The desire to set things right is out there, together we can move our state forward.

# MISSOURI HOUSE OF REPRESENTATIVES

## Missouri House District 135



**NAME** Steve Helms  
**POLITICAL PARTY** Republican  
**BIOGRAPHICAL INFO:**  
Website: [stevhelms.net](http://stevhelms.net)  
Facebook: [stevhelmspublicservant](https://www.facebook.com/stevhelmspublicservant)  
Twitter: [Stevehelms2010](https://twitter.com/Stevehelms2010)

### What areas of public policy are you personally passionate about and why?

In office, I have focused on the areas that concern most Missourians - healthcare and education. I've worked to lower the real cost of healthcare and improve access for all. Healthcare consumes too much of a person's paycheck and it doesn't have to be so. We've allowed this problem for far too long.

Also, I have voted every year to fully fund K-12 education according to the funding formula. It is important that we give our kids the best opportunity for a brighter tomorrow.

It is also the primary duty of government to protect all the Rights of the people, so that they may have life, liberty, and be able to pursue their happiness. I am committed to this task.

### What would be your approach to addressing the current challenges facing our state?

Prior to COVID-19, Missouri's economy was on track. We were growing and making much progress in expanding opportunity for all the people. Our number one task is to get our economy growing so that people may once again look to a future bright with opportunity.

I am confident that we will restore our economy for the betterment of our state and community.



**NAME** Betsy Fogle  
**POLITICAL PARTY** Democrat  
**BIOGRAPHICAL INFO:**  
Website: [fogle4mo.com](http://fogle4mo.com)  
Facebook: [Fogle4Mo](https://www.facebook.com/Fogle4Mo)  
Twitter: [Fogle4mo](https://twitter.com/Fogle4mo)

### What areas of public policy are you personally passionate about and why?

All Missourians deserve access to quality and affordable healthcare and I understand the barriers that restrict this access. As a public servant, I will fight for increased access to medical, dental and behavioral health services and advocate for healthcare reform at the state level. Missourians deserve representation that supports families, protects workers, invests in our children, and celebrates diversity. Every child should have access to free, quality public education regardless of their zip code, race or class. I will fight for those who are the foundation of our economy - our workers - to ensure they have fair wages, benefits and protections. I will advocate for a Missouri that welcomes all people and protects individuals from discrimination under the law.

### What would be your approach to addressing the current challenges facing our state?

I will fight for policy that is both equitable and sustainable, and represent Springfield in a way that is reflective of the people who live and work in our community. Additionally, I feel strongly that decisions based on credible research and on the recommendations of experts must be the norm. My time in public health has taught me to listen and to solve problems, and as a state representative I will continue to listen and fight to solve problems on a larger scale. I've seen first-hand the impact poor policy has on our neighbors too many times. The COVID-19 pandemic has further exposed the challenges we face and has illuminated the importance of a strong safety net. I have the experience and passion to ensure a better Missouri. We know we can do better and I'm committed to getting us there.



**NAME** Vicke Kepling  
**POLITICAL PARTY** Green  
**BIOGRAPHICAL INFO:**  
Website: [vickekeplingformo135.com](http://vickekeplingformo135.com) Facebook: [VMo135.com](https://www.facebook.com/VMo135.com)  
Twitter: [vmo135.com](https://twitter.com/vmo135.com) Age: 54  
Education: Master's Degree in Business Administration (MBA) Master's Degree in Technical and Professional Writing (MA) Graduate Certificate in Public Management, Graduate of Partners in Policymaking Program

### What areas of public policy are you personally passionate about and why?

PLANET FIRST—If elected, my first priority will be to write legislation that will protect our rivers, water quality, and natural resources. We are in a climate emergency and must consider our children and future generations: Without a livable planet, nothing else will matter.

WHEN TRUST MATTERS—My vote cannot be bought. Representatives should represent constituents, not big-money interests.

JUSTICE—I have been an activist for twenty years and will continue my advocacy in Jefferson City. I will fight for democracy, education, expanded preschool and college, inclusion and accessibility for people with disabilities, veterans' benefits, women's rights, LGBTQ rights, racial justice, healthcare for all, reproductive rights, senior care, worker's rights, unions, small businesses, family farms, healthy food, economic justice, a living wage, energy conservation, renewable energy, sustainability, transparency, and protection of our basic freedoms—NO AMERICAN LEFT BEHIND.

### What would be your approach to addressing the current challenges facing our state?

EDUCATION—In the words of Moses Brings Plenty, "It is time to educate, not discriminate." I will use my experience as a teacher and third-party, non-affiliated position to work with ALL legislators in a non-discriminatory manner.

LEGAL—I will use my skills in technical writing and background in working with law (disability issues) to write effective legislation and sound, persuasive arguments for the betterment of all Missourians.

VISION—Our society (and government) currently runs on capitalism, and we must reign in consumption to save our planet. COVID-19 has cost many jobs and businesses and resulted in less revenues/tax dollars to the state. Our state must stay within a budget (unlike the federal level), and I will use my MBA and understanding of economics to make forward-thinking decisions.

UNDO TAX CUTS—In 2018, Missouri passed tax cuts for corporations (SB 884) and the rich (HB 2540). We need to reverse these cuts so the funds can counteract current financial shortfalls.

## Missouri House District 136



**NAME** Craig Fishel  
**POLITICAL PARTY** Republican  
**BIOGRAPHICAL INFO:**  
 Facebook: craigfishel136

**What areas of public policy are you personally passionate about and why?**

1. Protecting local businesses from unfair practices in online sales. Specifically, I support levying a sales tax on all online sales since local brick-and-mortar businesses are required to collect sales tax. I believe in a level playing field for all business. Because we do not collect sales tax on online sales, we are currently missing out on as much as an estimated \$150-175 million in lost sales tax that could go to fill in for lost revenue at the city, county and state level.
2. Fair representation on local school boards, specifically the Springfield Public School District.

**What would be your approach to addressing the current challenges facing our state?**

1. Serving on the Economic Development Committee in the House provides an opportunity to work on the Wayfair Internet Sales Tax issue. The debate in Jefferson City is not whether to collect the tax; the debate is how to distribute the state portion of the revenue from such a tax. It is generally agreed that the city and county portions go to the cities and counties without conditions.
2. I have introduced a bill to district our local school board which will provide for five equal district representatives and two at-large representatives. Currently all school board members serve in an "at-large" capacity, meaning all can come from one area of the community and leave other areas of the community unrepresented, and require 500 signatures to be placed on the ballot. The bill would lower the signature requirement to 200, the same as required by an at-large city council member or Mayor. I am open to any discussions concerning this bill prior to beginning of the 101st session in January.



**NAME** Jeff Munzinger  
**POLITICAL PARTY** Democrat  
**BIOGRAPHICAL INFO:**  
 Website: jeffmunzinger.com  
 Facebook: MunzingerForMissouri136  
 Twitter: Munzinger4MO

**What areas of public policy are you personally passionate about and why?**

**PUBLIC EDUCATION:** Students represent our future. Ongoing funding cuts have left our students behind. Education can help end poverty. No longer can we sacrifice schools. **EARLY CHILDHOOD DEVELOPMENT:** Without a strong foundation, children struggle to get a positive start in life. **HEALTHCARE / MENTAL HEALTH:** Critical needs are unmet, yet demand for care continues to grow. **BUDGET:** Our constrained budget must be bolstered by adopting the 'Wayfair Fix'; ending the Timely Filing Discount; subjecting tax credits to the appropriations process. **ENVIRONMENTAL CONCERNS:** Clean air & water are a must. Global Warming is real. **INFRASTRUCTURE:** Rebuilding of roads & bridges has been neglected. Good roads are necessary for safe travel and economic development. **HI-SPEED INTERNET ACCESS:** Modern life demands improved access everywhere, both in cities and rural areas. **CONSUMER ED:** Smarter consumers are better citizens. 1970s Gov. Teasdale promoted personal finance education with great results.

**What would be your approach to addressing the current challenges facing our state?**


We must face the realities of chronic budget shortfalls that plague Missouri, and determine how to fund and provide essential services that make Missouri a place where people want to live. The impact of COVID-19 will require a strong and immediate response to stabilize our budget. We must assist families, making it imperative that we accept federal assistance to cushion the blow for families trying to make ends meet. By helping families withstand a downturn, Missouri can minimize long-term economic damage, as well as lay groundwork for the state's economic recovery from COVID-19. Additionally, we need to capture the hundreds of millions of dollars "left on the table" by the legislature's failure to: enact the 'Wayfair Fix' for internet sales (est. \$180 million); end the Timely Filing Discount to retailers (est. \$130 million); and scrutinize effectiveness of tax credits (est. \$600 million).



**MISSOURI JOBS WITH JUSTICE**

**We are building a democracy that works for all of us -- no exceptions.**



mojwj.org   
 @MOJWJ   
 @MissouriJWJ   
 MissouriJobsWithJustice 



THE RIGHT OF CITIZENS OF  
THE UNITED STATES TO  
VOTE SHALL NOT BE DENIED  
OR ABRIDGED BY THE  
UNITED STATES OR ANY  
STATE ON ACCOUNT OF SEX.

**CELEBRATING  
OF WOMEN'S**

**100 YEARS  
RIGHT TO VOTE**

Thank you to the suffragists who worked so hard to secure voting rights for women to pass the 19th Amendment! The League of Women Voters of Southwest Missouri is privileged to follow in their steps.



# MISSOURI HOUSE OF REPRESENTATIVES

## Missouri House District 137



**NAME** John F. Black  
**POLITICAL PARTY** Republican  
**BIOGRAPHICAL INFO:**  
**Website:** JohnBlack.net  
**Facebook:** electjohnblack

### What areas of public policy are you personally passionate about and why?

My current service in the House of Representatives reflects many of those interests by my committee service. Those committees are House Budget Committee, Higher Education, Utilities and the Task Force on Substance Abuse Treatment and Prevention. As a product of Missouri public schools from 1st grade through law school, and a former school board member, I am dedicated to the continued excellence and funding of public schools at all levels. Our country has recognized the necessity of quality public schools since its founding, and though efficiencies and improvements need to be achieved, that necessity remains. Endorsements from Better Schools for Missouri and the IMPACT Legislative Committee support my efforts.

I support removing unnecessary regulation burden on our businesses and their employees. My 100 per cent voting record from NFIB, representing 8000 small businesses, shows my support. I am dedicated to the sanctity of life, and am endorsed by Missouri Right to Life.

### What would be your approach to addressing the current challenges facing our state?

Service on the House Budget Committee in these critical times allows input into our economic and health concerns. It is easy for someone who is not there to say: I would do this, or I would do that, but the truth is our state has limited resources which must be prioritized to provide for the most deserving, and still maintain basic services. It is an issue by issue decision, and my approach is to listen and work together to try to do the best for the most, despite the fact that much of our state income is committed to federal match, and already tied up.

A most significant current challenge I am privileged to serve to address is the substance abuse tragedy. The Task Force of which I am a part, appointed by the Speaker of the House, is working to understand better ways to address both treatment and prevention. It is a most complicated problem, but what has been done to date is not adequate.

I am also focused on efficient and reliable utilities as a foundation for economic growth.



**NAME** Raymond Lampert  
**POLITICAL PARTY** Democrat  
**BIOGRAPHICAL INFO:**  
**Website:** upballot.com/raymond-lampert.com  
**Facebook:** LampertForMissouri137  
**Age:** 40  
**Education:** BA Drury University, JD University of Missouri - Columbia School of Law

### What areas of public policy are you personally passionate about and why?

As an attorney who represents working citizens, I believe in improving the wages and protections for all Missourians. I stood with the voters to defeat Right to Work and to improve minimum wage. I oppose laws that have made it easier for employers to retaliate against whistleblowers and that have prohibited local government from increasing the minimum wage in their communities.

As a lifelong resident of Missouri and a graduate of Missouri public schools, I oppose the continued cutting of our education budget. Just last month, our state cut over \$130 million from elementary and secondary education. Any elected officials who valued public education would not support the sabotaging of our children's future. I supported the CLEAN Missouri Amendment, which places tighter restrictions on lobbyist gifts to elected officials and requires fair drawing of legislative districts. I oppose the efforts of the incumbent party to attempt to overturn the will of the voters.

### What would be your approach to addressing the current challenges facing our state?

As this crisis shows, lack of access to health care is devastating to the people of this state, especially lower-income citizens. Our rural hospitals have been closing at an alarming rate due to our state's refusal to expand Medicaid coverage. We have already paid for Medicaid expansion through our Federal taxes, and it is time we received what we paid for.

The incumbent party claimed that cutting taxes on the rich would increase the state's budget, and it clearly has not done so. Instead they have responded by making further cuts to education and public services, which will only harm ordinary Missourians.

I believe in expanding coverage for unemployment benefits for workers who find themselves out of work due to no fault of their own. Workers are being denied the benefits that they earned due to our state's budget cuts. We need representatives who will work for the benefit of the people, instead of putting corporate profits over human lives.

## Missouri House District 138

NO PHOTO PROVIDED

**NAME** Brad Hudson  
**POLITICAL PARTY** Republican  
**BIOGRAPHICAL INFO:**  
 Website: brad4mo.com

Candidate was contacted but declined to respond

## Missouri House District 140

NO PHOTO PROVIDED

**NAME** Tricia Derges  
**POLITICAL PARTY** Republican  
**BIOGRAPHICAL INFO:**  
 Website: triciaderges.org

Candidate was contacted but declined to respond

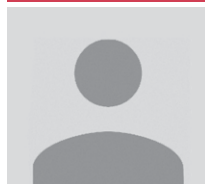
## Missouri House District 141

NO PHOTO PROVIDED

**NAME** Hannah S. Kelly  
**POLITICAL PARTY** Republican  
**BIOGRAPHICAL INFO:**  
 Website: hannahkellyformissouri.com

Candidate was contacted but declined to respond

## Missouri House District 139



**NAME** Jered Taylor  
**POLITICAL PARTY** Republican  
**BIOGRAPHICAL INFO:**  
 Website: taylorformissouri.com

Candidate was contacted but declined to respond



**NAME** Darlene Graham  
**POLITICAL PARTY** Democrat  
**BIOGRAPHICAL INFO:**  
 Website: grahamfor139modistrictrep.com  
 Facebook: darlenegramham-139M0districtrep  
 Age: 70  
 Education: B. S. In Education (double major in Theater and English)

### What areas of public policy are you personally passionate about and why?

Public Education. As a retired teacher I am very concerned about financing for public schools and teacher retirement. It seems that any time the state needs to cut their budget, public schools are the first to get the funding cut when, in reality, we should be investing more into educating our students. Our incumbent candidate has attempted (twice) to change how our teacher retirement funds are administered. His proposals would negatively effect how our retirement funds are invested and would eventually bankrupt our current system that has been in place for 60 years and has done a great job at protecting our retirement funds. I am also concerned about meeting the needs of our military retirees and those with disabilities. Our military retirees deserve to not have their benefits cut and the needs of those people with disabilities need to be addressed as well.

### What would be your approach to addressing the current challenges facing our state?

Listen, listen, listen. To be of any service to the challenges that face our state you need to listen to all sides of the problems and research the best way to solve them. There is no pat answer when it comes to correcting a problem. The best results come when everyone works together as a team--then real change can take place and challenges can be overcome.



## In season at the farm stand

Apples, tomatoes and other seasonal vegetables!

8011 E. AD Highway, Rogersville, MO65742

FOLLOW US ON FACEBOOK

# MISSOURI STATE SENATE

## Missouri Senate District 33



**NAME** Karla Eslinger  
**POLITICAL PARTY** Republican

Candidate's contact information unavailable



**NAME** Tammy Harty  
**POLITICAL PARTY** Democrat  
**BIOGRAPHICAL INFO:**  
**Website:** tammyhartyformissouri.senate.com  
**Facebook:** Tammy Harty for Missouri Senate District 33  
**Age:** 60  
**Education:** Doniphan High School 1978 Bachelor's degree in Communications from Southeast Missouri State University, Master's degree in Elementary Education from Southeast Missouri State University.

### What areas of public policy are you personally passionate about and why?

Healthcare, public education, and economic development are my three primary missions for Southern Missouri, and all of Missouri. I worked to push Medicaid Expansion and was very happy it passed. This, however, is just the first step in making sure every Missourian has access to quality and affordable healthcare, regardless of where they live. As an educator, I have seen the gulf widen between rural and urban and suburban public schools in Missouri. This has become even more evident with COVID 19. Many rural schools simply do not have access to broadband internet in order to serve their students virtually. This makes it not only an educational disadvantage, but a health disadvantage. So rural broadband is both an economic and an educational imperative for Missouri. Rural Missouri is sadly lacking in physical infrastructure, which needs to be improved, but equally important is the broadband infrastructure. Both very much impact the opportunities for economic growth for Missouri.

### What would be your approach to addressing the current challenges facing our state?

As a teacher, I have been paying close attention to the challenges that COVID19 has placed upon Missourians. The feeling is that somehow we must sacrifice safety for the sake of our economy. That is completely false. First, the handling of the problem was completely backwards. While small business has suffered tremendously economically because of COVID, the big businesses are reaping record profits. Instead of closing down small businesses, we should have helped the Mom and Pops stay open. They can more easily control traffic and restrictions such as masking than can the big box stores. That would have helped our small businesses and kept the virus better controlled. And again, strengthening rural broadband would help ease the educational inequities among school districts and lessen the spread of the virus. This virus has revealed many cracks in our systems. We need to be fixing those now, because this is likely just the first round of problems that will test us.



## WHATEVER YOUR GOAL, WE CAN HELP YOU REACH IT.



While Git Fit Headquarters works with people of all ages, we specialize in training for older adults. Our goal is for clients to remain as active as they want to with as little pain as possible. We help prepare clients for joint replacements, and offer continued rehabilitation. We also work with post-stroke patients and individuals with other neural issues. Our main focus is helping you maintain or improve your quality of life.

[GITFITHEADQUARTERS.COM](http://GITFITHEADQUARTERS.COM) • (417) 886-6387  
640 W. REPUBLIC RD STE. 108, SPRINGFIELD, MO 65807

Isn't it time you got the same kind of straightforward guidance for your finances?  
You value informed decision-making in the democratic process.



*Most families have a bunch of insurance and investment products that they've purchased from various salespeople over time, but don't really know if all the pieces fit together.*

*At The Wealth Conservatory, instead of getting paid by selling products, we work on a fixed-fee consulting basis to help you see the big picture so you understand where you are and how to move forward effectively.*

**If you're ready to take the guesswork out of your finances, contact Michael Babcock, CFP®, CPA to schedule a no-obligation introductory meeting.**

▪ (800) 472-1844 ▪  
▪ 400 EAST WALNUT ST., SUITE 128, SPRINGFIELD, MO 65806 ▪  
▪ [WWW.WEALTHCONSERVATORY.COM](http://WWW.WEALTHCONSERVATORY.COM) ▪

# U.S. REPRESENTATIVE

1

## Missouri District 4, United States Congress

NO PHOTO  
PROVIDED

**NAME** Vicky Hartzler  
**POLITICAL PARTY** Republican

Candidate's contact information unavailable

NO PHOTO  
PROVIDED

**NAME** Lindsey Simmons  
**POLITICAL PARTY** Democrat

Candidate's contact information unavailable

NO PHOTO  
PROVIDED

**NAME** Steven Koonse  
**POLITICAL PARTY** Libertarian

Candidate's contact information unavailable



# Your membership furtheres our work toward justice and equality. Become a member today!

Visit our website to learn how to become a local member, give a donation or join the fight with us.

Springfield NAACP Branch | PO Box 8983 | Springfield, MO 65803  
info@springfieldnaacp.org | 417-873-6386 | naacpspringfieldmo.org

CONGRESSIONAL CANDIDATES

# Maschino's

Experience our difference



*For unique, outdoor living.*

1715 S. Campbell, Springfield  
Mon - Sat 9:30am - 6:00pm  
417.869.1513

www.maschinos.com



# YOUR PROFESSION + PASSION

Your Drury Fusion is our innovative academic program that allows you to fuse professional goals and personal passions while gaining practical, real-world experiences and impressive credentials. It's beyond anything you have ever done. **Yet.**

Learn more at [drury.edu/fusion](http://drury.edu/fusion)



# U.S. REPRESENTATIVE

## Missouri District 7, United States Congress

NO PHOTO  
PROVIDED

**NAME** Billy Long  
**POLITICAL PARTY** Republican  
**BIOGRAPHICAL INFO:**  
Website: [billylongforcongress.com](http://billylongforcongress.com)  
Facebook: [BillyLongforCongress](https://www.facebook.com/BillyLongforCongress)  
Twitter: [USRepLong](https://twitter.com/USRepLong)

Candidate was contacted but declined to respond.



**NAME** Teresa Montseny (Withdrew)  
**POLITICAL PARTY** Democrat



**NAME** Kevin Craig  
**POLITICAL PARTY** Libertarian  
**BIOGRAPHICAL INFO:**  
Website: [kevincraig.us/](http://kevincraig.us/)  
Facebook: [KevinCraigforCongress](https://www.facebook.com/KevinCraigforCongress)  
Age: 62  
Education: B.A. J.D.

### What would be your approach to addressing the current challenges facing our nation?

I am a Christian, therefore I am a Libertarian. Christians oppose the use of "the sword" to promote their ideals. The Libertarian Party requires members to certify that "I oppose the initiation of force to achieve political or social goals." Logical consistency with this non-aggression principle demands the abolition of the punitive parasitical "Public Sector," and the unleashing of the persuasive productive "Private Sector." In the last century, "capitalism" has lifted billions of human beings out of poverty, while "socialism" has created gulags, concentration camps, bitter poverty and mass death. I believe in 100% pure laissez-faire capitalism and 0% socialism. No corporate welfare, no wars to benefit multinational corporations. No compulsory atheistic education. No violence inflicted on pathetic dope-smoking losers. Our social problems are spiritual, not political. "Liberty Under God" is the philosophy that made America the most prosperous and admired nation in human history.

### What would be your top priority for congressional action in 2021? Briefly explain why and how you would address this priority.

Abolish the unconstitutional Department of Education, and win for parents the freedom to send their children to schools which teach "Liberty Under God." Most parents want their children to be taught that God says not to kill, keep your promises, work hard, and wait until you get married. Parents want their kids to be taught that the Declaration of Independence is actually true, but the federal government prohibits our public schools from teaching kids that:

- the existence of God is a "self-evident truth"
- our rights are the endowment and product of the intelligent design of our Creator (not a gift from government)
- Americans are obligated to observe "the Laws of Nature and of Nature's God," like "Thou shalt not steal."
- our actions must one day pass judgment with "the Supreme Judge of the world"
- Americans can have "a firm reliance on the Protection of Divine Providence."

"America" is an ideal: "Liberty Under God."  
Washington D.C. has become the enemy of the American ideal.



**SECTION 2**  
**VOTER'S**  
**GUIDE**  
★ ★ ★ ★ ★ TO ★ ★ ★ ★ ★  
**STATEWIDE/**  
**PRESIDENTIAL**  
**CANDIDATES**  
★ ★ ★ ★ ★ AND ★ ★ ★ ★ ★  
**BALLOT ISSUES**



# STATEWIDE OFFICE

## Governor



**NAME** Mike Parson  
**POLITICAL PARTY:** Republican  
**BIOGRAPHICAL INFO:**  
**Website:** mikeparson.com  
**Age:** 65

### What are the most compelling policy challenges you expect to face if elected and how do you propose to address them?

The COVID-19 crisis brought financial burdens to our state and has had severe impacts on our anticipated economic growth. My administration is working hard to make sure Missourians can return to work safely to be financially stable again. This will and has already presented challenges to managing a balanced state budget, and it's why having experienced leadership matters.

### What are your top three priorities for Missouri?

From day one as governor, my administration has been focused on improving our state's economy, workforce development and infrastructure. Expanding workforce development programs will not only help get more Missourians working, but also boost our economy. Infrastructure projects are needed throughout the state and will contribute to Missourians getting back to work.



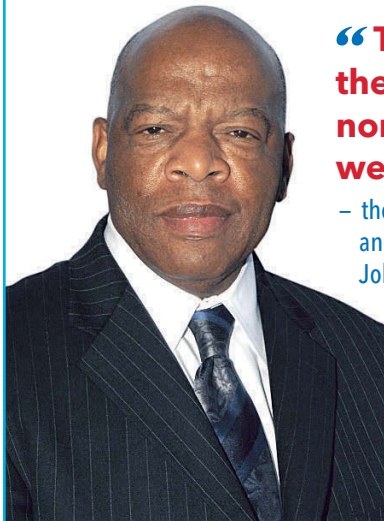
**NAME** Nicole Galloway  
**POLITICAL PARTY:** Democratic  
**BIOGRAPHICAL INFO:**  
**Website:** NicoleGalloway.com  
**Education:** MBA, University of Missouri  
**Age:** 38

### What are the most compelling policy challenges you expect to face if elected and how do you propose to address them?

Our recovery from COVID will be the defining issue of our time. We can't go back to where we were on the eve of this crisis because that wasn't good enough for too many people. The priorities in Jefferson City have been wrong on health care, education and economic opportunity. Missourians need a governor who will put working families first instead of special interests.


### What are your top three priorities for Missouri?

Health care: I support making health care more affordable and expanding Medicaid so a quarter million working Missourians can have health insurance. Economic opportunity: I'll implement an agenda that supports working families, small businesses, education and good-paying jobs. Gun violence: We need common sense gun safety measures to address the crisis of gun violence.





**“The VOTE is the most powerful nonviolent tool we have.”**  
– the late civil rights leader and U.S. Representative John Robert Lewis

*Thanks to the League of Women Voters for Making Democracy Work for 100 years!*



**GREENE COUNTY DEMOCRATS**

 [www.gcmodems.org](http://www.gcmodems.org) ★ 417.886.8980 

*Paid for by the Greene County Democratic Central Committee - Tyler Gunlock, Treasurer*



## GORMAN-SCHARPF FUNERAL HOME

### Licensed Funeral Directors of Distinction

W. Bruce Howell · Robert J. Lohmeyer · Don R. Lohmeyer  
Heather K. Howell · Clint W. Mease · Angela N. Collins  
Harley R. Williams · Andy D. Vowell · Dulcinea M. Lane  
Nichole E. Bauer · Barbara A. Hinds · Angie Howell Larsen

1947 E. SEMINOLE · 886-9994 · GORMANSCHARPF.COM  
LOCALLY OWNED AND OPERATED FOR OVER 70 YEARS

**Governor**

NO PHOTO PROVIDED

**NAME** Jerome Howard Bauer  
**POLITICAL PARTY:** Green  
**BIOGRAPHICAL INFO:**  
**Facebook:** Jerome-Bauer-Green-for-Missouri-Governor  
**Education:** Ph.D., University of Pennsylvania  
**Age:** 63

**What are the most compelling policy challenges you expect to face if elected and how do you propose to address them?**

The big problem is wealth inequality. If elected, I would work cooperatively to build worker- and consumer-owned coops and a universal basic income in exchange for universal basic service. Let's bring back the Civilian Conservation Corps and establish affordable education and vocational training for all, student loan debt forgiveness and money-back tuition guarantees.

**What are your top three priorities for Missouri?**

1. Universal health care, funded by a Wall Street transaction tax and sin tax. We can do better than Medicaid expansion. 2. Disability rights and universal design. 3. Transportation equity and accessibility.



**NAME** Rik Combs  
**POLITICAL PARTY:** Libertarian  
**BIOGRAPHICAL INFO:**  
**Website:** combsformissouri.org  
**Education:** Ph.D., University of Texas-Austin  
**Age:** 56

**What are the most compelling policy challenges you expect to face if elected and how do you propose to address them?**

The state's budget and going forward with runaway spending and potential tax increases. We must cut spending where we can, reduce taxes on working Missourians and small businesses, and protect personal property at every opportunity.

**What are your top three priorities for Missouri?**

Slash taxes. Cut spending. Protect personal property.

**Lieutenant Governor**



**NAME** Mike Kehoe  
**POLITICAL PARTY:** Republican  
**BIOGRAPHICAL INFO:**  
**Website:** mikekehoe.com  
**Age:** 58

**What are the most compelling policy challenges you expect to face if elected and how do you propose to address them?**

The global pandemic is a health and economic crisis that will create challenges for Missourians for a long time. To overcome these challenges we need leadership experience as it relates to job creation and economic opportunities. I've managed and led many businesses and hundreds of employees throughout my career, and I will continue to use that experience to lead Missouri.

**What are your top three priorities for Missouri?**

Missourians want to see common-sense leaders who share their values and will work together to get real results. I want to protect the American Dream for future generations of Missourians, and I will continue working to bring companies to the state, advocating for pro-family, pro-jobs policies and helping our entrepreneurs create opportunities for working Missourians.



**NAME** Alissia Canady  
**POLITICAL PARTY:** Democrat  
**BIOGRAPHICAL INFO:**  
**Website:** canadyformissouri.com  
**Education:** J.D., University of South Dakota  
**Age:** 41

**What are the most compelling policy challenges you expect to face if elected and how do you propose to address them?**

The most compelling policy challenges will be addressing gun violence and re-evaluating the children's division of the Department of Family Services and whether they are effectively working together to stabilize families. I will address both issues holistically by asking how do our current policies protect children, and what can we do to improve those outcomes.

**What are your top three priorities for Missouri?**

The health of Missourians. The health of our economy. Reducing the number of gun-related deaths of children and Black men.

# STATEWIDE OFFICE

## Lieutenant Governor



**NAME** Kelley Dragoo  
**POLITICAL PARTY:** Green  
**BIOGRAPHICAL INFO:**  
**Website:** missourigreenparty.org/vote\_for\_kelley\_dragoo  
**Education:** B.S., University of Central Missouri  
**Age:** 31

**What are the most compelling policy challenges you expect to face if elected and how do you propose to address them?**

We need to continue to defend Missourians against the gerrymandering and voter suppression people are experiencing throughout the state and to begin taking the climate crisis seriously through aggressive protections against flooding and investment in more sustainable energies. The lieutenant governor is uniquely positioned to work alongside the legislature to enact policy.

**What are your top three priorities for Missouri?**

Worker's rights. Medicare for all. Public transportation.



**NAME** Bill Slantz  
**POLITICAL PARTY:** Libertarian  
**BIOGRAPHICAL INFO:**  
**Website:** billslantz.com  
**Age:** 62

**What are the most compelling policy challenges you expect to face if elected and how do you propose to address them?**

If you think we need a lieutenant governor, then maybe you don't want to vote for me. But you should know that it is possible to get by without one. In these times, we're learning to get by without lots of things. There are several states that don't have lieutenant governors.

**What are your top three priorities for Missouri?**

I tell people that if they want a smaller government, get on board with us. If we start getting government too small, then hop off. Our train won't be moving fast. It's very hard to undo the government. That's a train that just won't stop.

**WHEN EXPERIENCE MATTERS**  
*... we're here for you.*

Accounting & Payroll • Audit & Attestation  
 Taxation • Technology • Financial Services

**RMMC**  
 CERTIFIED PUBLIC ACCOUNTANTS  
 Roberts, McKenzie, Mangan & Cummings, P.C.

4035 S. Fremont • Springfield MO 65804  
 (417) 883.5348 • rmmc-cpa.com

**empower:abilities**  
 EMPOWER THE DISABILITY VOTE

**"VOTE**  
 as if your life depends on it - because it does!"  
 -Justin Dart,  
 "Father" of the Americans with Disabilities Act

**31,000** PEOPLE HELPED  
**6000** VOLUNTEERS

**Our Mission:**  
 To remove barriers and empower independent living for all people with disabilities.

**Donate Now**

Advocacy | Information & Referral | Peer Support | Independent Living Skills | Personal Care

empowerabilities.org  
 info@empowerabilities.org  
 2864 S Nettleton Ave Springfield MO 65807  
 Phone/TTY: 417-886-1188 Toll-Free: 800-676-7245  
 Fax: 417-886-3619

Member of: American Association of People with Disabilities, National Council on Independent Living, Association of Programs for Rural Independent Living, Missouri Association of Centers for Independent Living.  
 empower:abilities is a non-profit 501(c)(3) organization. All proceeds benefit persons with disabilities.

"Empower the Disability Vote" campaign is in partnership with  
**Missouri Foundation for Health**  
 Accelerating for Change

Secretary of State



**NAME** John R. (Jay) Ashcroft  
**POLITICAL PARTY:** Republican  
**BIOGRAPHICAL INFO:**  
**Website:** AshcroftforMissouri.com  
**Education:** J.D., St. Louis University  
**Age:** 47

**What are the most compelling policy challenges you expect to face if elected and how do you propose to address them?**

I will continue working with local election authorities to ensure the security of and confidence in our elections. This is critical in an environment of foreign cyberthreats and COVID-19. I will continue to lead nationally on cyber-security issues, bringing other secretaries of state together as we did in 2018 for the National Election Security Summit in St. Louis.

**What are your top three priorities for Missouri?**

1. Continue enhancing the safety and security of our elections, while ensuring that every registered voter can vote.
2. Continue to grow support for our state and public library system, including better broadband support, job training and educational support services.
3. Continue making it easier for individuals to start new businesses and for current companies to grow.



**NAME** Yinka Faleti  
**POLITICAL PARTY:** Democrat  
**BIOGRAPHICAL INFO:**  
**Website:** yinkafaleti.com  
**Education:** J.D., Washington University  
**Age:** 44


**What are the most compelling policy challenges you expect to face if elected and how do you propose to address them?**

In Missouri, eligible voters face unnecessary obstacles when attempting to cast a ballot, including notary requirements, confusing ballot language and limited times and polling locations. I would work to ensure that these cumbersome and unnecessary hurdles are eliminated so that eligible Missouri voters can easily and efficiently exercise their right to vote.

**What are your top three priorities for Missouri?**

My priorities are: 1. Ensuring that all elections in Missouri are safe, secure and accessible for all eligible voters. 2. Guaranteeing that the ballot initiative process is protected and Missouri voices are heard. 3. Removing unnecessary bureaucratic hurdles that get in the way of entrepreneurial spirit in our state.

Helpful voter information is also available in Spanish at [Vote411.org](http://Vote411.org).  
 La información útil para el votante también está disponible en español en [Vote411.org](http://Vote411.org).



When women sponsor, mentor and help each other, we all rise.

**DR NANCY**



**Women Connect 4Good**

[www.drnancoreilly.com](http://www.drnancoreilly.com)

**THE FIDUCIARY STANDARD**



**Central Trust Company**

**WEALTH & RETIREMENT PLANNING**

**INVESTMENT MANAGEMENT**

**TRUST & ESTATE SERVICES**



**WWW.CENTRALTRUST.NET**

**1-417-883-3838**

# STATEWIDE OFFICE

## Secretary of State



**NAME** Paul Venable  
**POLITICAL PARTY:** Constitution  
**BIOGRAPHICAL INFO:**  
**Website:** youwin.paulvenable.org  
**Education:** Some college  
**Age:** 66

### What are the most compelling policy challenges you expect to face if elected and how do you propose to address them?

The most compelling policy challenge we are facing today is how to address the attacks on the liberty of my fellow Missourians. Not since the founding of the republic have the citizens faced such a challenge. We will address them primarily by educating the citizens on the principles of the Declaration of Independence and the United States and Missouri Constitutions.

### What are your top three priorities for Missouri?

1. I propose that the Missouri Constitution be amended to provide for statewide recall of all elected officials. 2. I propose that elections in Missouri be conducted by the use of hand-counted paper ballots. 3. I propose that the state of Missouri discontinue the practice of primary elections and utilize the caucus system.



**NAME** Paul Lehmann  
**PARTY:** Green  
**BIOGRAPHICAL INFO:**  
**Education:** M.Div., Eden Theological Seminary  
**Age:** 70

### What are the most compelling policy challenges you expect to face if elected and how do you propose to address them?

Our electoral system was never democratic in the history of our country. After 230 years, we still have obstacles to voting. I propose making voting universal for all citizens with one lifetime registration at the age of 18. Every citizen would receive a coded ballot by mail at every election to be returned to the county clerk. True democracy at work.

### What are your top three priorities for Missouri?

1. Make voting universal and accessible for all citizens by mail, and dismantling the current disenfranchising voting structure and practice, saving hundreds of thousands of dollars. 2. Audit and reform the secretary of state's office to eliminate waste and discriminatory rules and procedures. 3. Lobby the General Assembly to adopt one time zone year-round.



**NAME** Carl Herman Freese  
**POLITICAL PARTY:** Libertarian  
**BIOGRAPHICAL INFO:**  
**Education:** Some college  
**Age:** 61

### What are the most compelling policy challenges you expect to face if elected and how do you propose to address them?

A. Faith in elections is a big deal, executive policies that help rather than let people take part and access their chosen local party activities. B. With so many people looking for a party that actually represents them, and not all finding it in the Libertarian Party, it is my future job to help the people of Missouri find a home they feel meets their political needs.

### What are your top three priorities for Missouri?

1. Election policy reform for people and all parties of Missouri to take their place in the political debates that form and guide government policy. 2. Libertarians' lack of trust in government binds actions of government in properly documented red tape. 3. "Red Tape" the reins for governor and private citizens to control the government to keep it from the people's way.

## ACCEPTING NEW MUSIC THERAPY CLIENTS NOW!



ONLINE OR IN PERSON!  
GROUP & INDIVIDUAL- ALL AGES

Musical Bridges  
Music Therapy  
MUSICALBRIDGESMT.COM

info@musicalbridgesmt.com 417-459-2737

# KNOW YOUR JUDGES

---

# VOTE YOUR JUDGES



**See if your judges are  
doing a good job before  
you vote!**

**Get the information you need to have fair, skilled  
and impartial judges that Missourians deserve.**

**Learn more at: [YourMissouriJudges.org](http://YourMissouriJudges.org)**

## **FINISH THE BALLOT NOV. 3**

Judges who serve under Missouri's Non-Partisan Court Plan run in retention elections after their first 12 months on the bench and at the end of each term. A statewide committee reviews the performance of nonpartisan judges up for retention.

# STATEWIDE OFFICE

## Attorney General



**NAME** Eric Schmitt  
**POLITICAL PARTY:** Republican  
**BIOGRAPHICAL INFO:**  
**Website:** schmittformissouri.com  
**Education:** J.D., St. Louis University  
**Age:** 45

**What are the most compelling policy challenges you expect to face if elected and how do you propose to address them?**

Public safety and making our communities, neighborhoods and streets safer are some of our greatest challenges. We will accomplish this by building on successful initiatives like Safer Streets. This initiative brings together the Missouri attorney general's office, U.S. attorney's office and local law enforcement units to help fight and prosecute violent crimes.

**What are your top three priorities for Missouri?**

I am committed to protecting citizens from violent crime, helping victims of sexual assault get justice by eliminating the backlog of untested sexual assault kits with my SAFE Kits Initiative and doing everything we can to stop human trafficking. Our initiatives in these areas are some of the reasons I was endorsed by the Missouri Fraternal Order of Police.



**NAME** Rich Finneran  
**POLITICAL PARTY:** Democrat  
**BIOGRAPHICAL INFO:**  
**Website:** richfinneran.com  
**Education:** J.D., Washington University  
**Age:** 36

**What are the most compelling policy challenges you expect to face if elected and how do you propose to address them?**

My biggest challenge as attorney general will be rooting out the political bias that has infected the current administration. I will enhance the AG's conflict of interest policies, end the political crusade against the Affordable Care Act, protect Clean Missouri and stop wasting taxpayer dollars in hopeless, politically motivated lawsuits.

**What are your top three priorities for Missouri?**

My first priority is protecting health care, including coverage for pre-existing conditions. Second is criminal justice: I will address the inequities of our system head-on and ensure the law is enforced fairly for all. Third, I'll take on corruption to make sure the AG's office benefits the people, not politicians or the well-connected.

**Study. Listen. Learn.**  
**VOTE!**  
We're all in this together.



**FAZOLI'S**  
*FAST. FRESH. ITALIAN.*

SPRINGFIELD: 2055 E. Independence Ave. • 2137 N. Glenstone Ave.  
JOPLIN: 4027 Richard Joseph Blvd.  
Order and pay online at [fazolis.com](http://fazolis.com)

Present this ad for a  
**FREE**  
**ITALIAN ICE OR**  
**LARGE DRINK**  
with purchase of  
any adult entrée

One coupon per customer/visit. No substitutions. Not valid with any other offer. Cannot be copied or sold. Internet distribution prohibited. Must surrender coupon at redemption. One coupon per transaction. Valid only at participating locations. Expires 12/31/20 Coupon Code: C72123



Attorney General



**NAME** Kevin C Babcock  
**POLITICAL PARTY:** Libertarian

Candidate was contacted but declined to respond



**BE SMART**

- Secure**  
all guns in your home and vehicles
- Model**  
responsible behavior around guns
- Ask**  
about the presence of unsecured guns in other homes
- Recognize**  
the role of guns in suicide
- Tell**  
your peers to be SMART

For more information or to schedule a presentation, visit [besmartforkids.org](http://besmartforkids.org) or email [missouri@momschapterleaders.org](mailto:missouri@momschapterleaders.org)

Find Missouri NEA at [www.mnea.org](http://www.mnea.org)



@MissouriNEA



/MissouriNEA



/MissouriNEAtube

**Missouri NEA**  
*Unite. Inspire. Lead.*



Exercise your power of voice.  
**Get out and vote!**



Office of Public Affairs Support  
**Missouri State**  
UNIVERSITY

# PRESIDENTIAL CANDIDATES

## U.S. President

### THE JOB OF THE PRESIDENT

The President is the head of state of the United States of America, the Chief Executive Office and the Commander in Chief of all military forces. The powers of the President are prescribed in the Constitution and federal law. The President appoints the members of the Cabinet, ambassadors to other nations and the United Nations, Supreme Court Justices, and federal judges, subject to Senate approval. The President, along with the Cabinet and its agencies, is responsible for carrying out and enforcing the laws of the United States. The President may also recommend legislation to the United States Congress.

**Note:** All candidates who will appear on your state’s ballot are listed on these two pages, but only those that meet the following criteria were invited to respond to the League’s questions in this guide:

1. The candidate must have made a public announcement of their intention to run for President
2. The candidate must meet the Presidential Election Campaign Fund Act’s minimum contribution threshold requirements for qualifying for matching funds, based on the most recent data publicly available on the Federal Elections Commission website.
3. The candidate must qualify for the ballot in enough states to win a majority of electoral votes

**ADDITIONAL INFORMATION ON PRESIDENTIAL CANDIDATES IS AVAILABLE AT [WWW.VOTE411.ORG](http://WWW.VOTE411.ORG).**

Copyright © 2020 by the League of Women Voters Education Fund



**NAME** Donald J. Trump  
**POLITICAL PARTY** Republican  
**BIOGRAPHICAL INFO:**

Website: donaldjtrump.com  
Facebook: donaldjtrump  
Twitter: realdonaldtrump  
Age: 74

**What actions would you take to balance public health and economic recovery in the US, both in light of COVID-19 and for the long term?**

Candidate was contacted but did not respond.

**What is the most important issue facing our country and how do you plan to address it during your first 100 days in office?**

Candidate was contacted but did not respond.

**How will you address racial injustice in our country on day one of your administration?**

Candidate was contacted but did not respond.

**What aspects of our current immigration policy will your administration address first?**

Candidate was contacted but did not respond.

**What will you do over the long term to ensure access to quality healthcare for all?**

Candidate was contacted but did not respond.



(in their own words!)

- Nationwide candidate info
- Polling place locations
- Online voter registration tool
- ID requirements
- Absentee ballot info
- Ballot measure info
- Early voting options
- Election dates

# VOTING BRINGS US TOGETHER AS AMERICANS



We're all equal on Election Day.

**Vote Tuesday, Nov. 3**



# PRESIDENTIAL CANDIDATES

## U.S. President



**NAME** Joe Biden  
**POLITICAL PARTY** Democrat  
**BIOGRAPHICAL INFO:**  
Website: [joebiden.com](http://joebiden.com)  
Facebook: [joebiden](https://www.facebook.com/joebiden)  
Twitter: [joebiden](https://twitter.com/joebiden)  
Age: 77

### **What actions would you take to balance public health and economic recovery in the US, both in light of COVID-19 and for the long term?**

It's a false choice to think we have to choose between our public health and economy; they're linked. On Day One, I'll implement the COVID strategy I've laid out since March - surging testing and protective gear; distributing vaccines safely and free of politics; helping schools and small businesses cover costs; and getting state and local governments resources to keep educators, cops, and firefighters on the job. I'll respect science and tell the truth, period. And I'll build our economy back better, creating millions of good-paying jobs. I'll revitalize manufacturing, build a clean energy economy, and boost caregiving - easing the squeeze on working families, providing paid leave, and getting caregivers the respect and pay they deserve.

### **What is the most important issue facing our country and how do you plan to address it during your first 100 days in office?**

Pandemic. Recession. Racial injustice. Climate change. We're facing historic crises; we have to tackle them all at once. Character and experience count. I'll listen to scientists, tell the truth, and make sure we're never so unprepared for a pandemic again. I'll expand the Affordable Care Act, lowering costs and making health care a right for all. I'll build our economy back better, and make racial equity central to recovery. In these crises, we have an enormous opportunity, if we come together. As President, I'll draw on the best of us, not the worst. I'll work as hard for those who don't support me as for those who do. That's a president's job: to represent us all. To take responsibility. To protect the nation. To unite and to heal.

### **How will you address racial injustice in our country on day one of your administration?**

America is at an inflection point. It's past time to end our inequities and deal with the denial of our nation's promise to too many for too long. I'll fight to end the health inequities that COVID-19 amplifies; and give every child the same strong start in life by offering universal Pre-K, tripling funding for Title I schools, and making public college debt-free for most families. I'll make racial equity central to our recovery, closing the racial wealth and income gaps, boosting home ownership, and investing in communities and entrepreneurs of color - building a stronger, more inclusive middle class for the future. And, I'll work for real police reform and invest in shifting our criminal justice focus from incarceration to prevention.

### **What aspects of our current immigration policy will your administration address first?**

My immigration policy is built around keeping families together. It's past time to reform our broken system, restoring family unification and diversity as its core pillars. As President, I'll reverse Trump's assault on our values on Day One, ending his cruel border policies that rip children from their mothers' arms. I'll act immediately to protect Dreamers and their families, and invest real political capital in finally delivering legislative immigration reform, with a roadmap to citizenship for the nearly 11 million undocumented people who already do so much to make our communities strong. We have to enforce our laws, but in a way that's humane, respects due process, honors our values, and sees the big picture.

### **What will you do over the long term to ensure access to quality healthcare for all?**

This pandemic makes clear: All Americans need access to quality, affordable health insurance. That's why I'll protect and build on the Affordable Care Act. I helped to secure the final key votes to pass that landmark law, protecting 100 million Americans who can no longer be turned away or denied coverage for pre-existing conditions, and bringing coverage to 20 million more. As President, I'll build on that progress with a public option and lower health care and prescription drug costs. I'll make all COVID-19 testing, treatment, and vaccines free; double funding for community health centers that are so often on the frontlines of care; and much more.

# PRESIDENTIAL CANDIDATES

## U.S. President, Continued

The following candidates have qualified for the Missouri state ballot according to the Secretary of State of Missouri, but did not meet the League of Women Voters Education Fund criteria and therefore were not asked to respond to the League's questions in this guide.

NO PHOTO  
PROVIDED

**NAME** Jo Jorgensen  
**POLITICAL PARTY** Libertarian  
**BIOGRAPHICAL INFO:**  
Website: jo20.com  
Facebook: jojorgensen  
Twitter: Jorgensen4POTUS  
Age: 63

NO PHOTO  
PROVIDED

**NAME** Don Blankenship  
**POLITICAL PARTY** Constitution  
**BIOGRAPHICAL INFO:**  
Website: donblankenship.com  
Facebook: donblankenship  
Twitter: DonBlankenship  
Age: 70

NO PHOTO  
PROVIDED

**NAME** Howie Hawkins  
**POLITICAL PARTY** Green  
**BIOGRAPHICAL INFO:**  
Website: howiehawkins.us  
Facebook: howiehawkins  
Twitter: HowieHawkins  
Age: 67



## PENMAC ENCOURAGES YOU TO VOTE!

### CONNECTING JOB SEEKERS AND BUSINESSES

Penmac Staffing offers FREE help finding a job, and helps businesses with their HR needs. Contact us today for more information!

*Penmac Staffing is proud to support the League of Women Voters of Southwest Missouri.*

**Penmac**  
STAFFING

447 South Avenue  
Springfield, MO  
877-473-6622  
www.penmac.com

**AMENDMENT 1: Simple majority required.**

**Ballot wording:** Do you want to amend the Missouri Constitution to extend the two term restriction that currently applies to the Governor and Treasurer to the Lieutenant Governor, Secretary of State, Auditor and the Attorney General? State and local governmental entities estimate no costs or savings from this proposal.

**Summary:** If passed, Amendment 1 would limit the lieutenant governor, secretary of state, state auditor and attorney general to two terms. The state constitution now limits only the governor and treasurer to two terms.

**Supporters** say term limits will keep elected officials from becoming career politicians.

**Opponents** contend that those positions should be limited by voters, not the constitution.

**AMENDMENT 3: Simple majority required.**

**Ballot wording:** Shall the Missouri Constitution be amended to: Ban gifts from paid lobbyists to legislators and their employees; Reduce legislative campaign contribution limits; Change the redistricting process voters approved in 2018 by: (i) transferring responsibility for drawing state legislative districts from the Nonpartisan State Demographer to Governor-appointed bipartisan commissions; (ii) modifying and reordering the redistricting criteria. State governmental entities expect no cost or savings. Individual local governmental entities expect significant decreased revenues of a total unknown amount.

**Summary:** This proposal asks voters to reverse key parts of a “Clean Missouri” redistricting overhaul they approved in 2018. The ballot language for Amendment 3 was disputed and had to be finalized by a Missouri Western District Court of Appeals ruling.

If passed, Amendment 3 would eliminate the nonpartisan state demographer used for redistricting approved in 2018. It would return to the use of bipartisan commissions in the state house and state senate appointed by the governor. It would not use the total population count to determine districts, but only count eligible voters. It would also change the limit of lobbyists’ gifts from \$5 to \$0 and lower the campaign contribution limit for state senate campaigns from \$2,500 to \$2,400.

**Supporters** say that voters need to be given another chance to consider the issue of redistricting. They also say that bipartisan commissions would less likely be corrupted, reflect the views of different communities, and protect minorities.

**Opponents** say that Amendment 3 is the legislators’ gerrymandering amendment, and that it would reverse the voters’ 2018 decision, a threat to democracy. Missouri would be the only state in the country to discount 1.5 million children, immigrants, international students and incarcerated citizens. Communities of color would be significantly underrepresented.

**SHARE  
WHAT YOU KNOW**

**LWV** Tell a friend about **Vote411.org**,  
the digital Voter’s Guide produced by  
League of Women Voters.  
**Find out where candidates stand.**

# POWER TO THE VOTER



Compare Candidates  
Build Your Ballot  
Map Your Polling Place  
Find Voting Information

**ALL AT VOTE411.ORG**

Your Vote Counts:  
**Election Day November 3**



417-501-6067 • [lwvswmo.org](http://lwvswmo.org) • [lwvsouthwestmo@gmail.com](mailto:lwvsouthwestmo@gmail.com)  
Find us on Instagram, Facebook, Twitter and YouTube